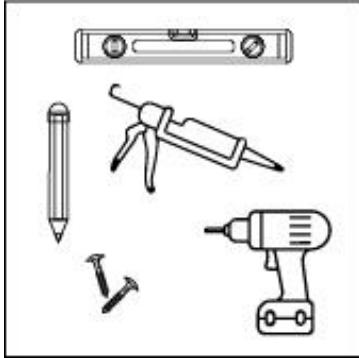


INSTALLATION INSTRUCTIONS ACOUSTIC PANEL

Preparation

Depending on the type of installation, you will need the following tools and materials:

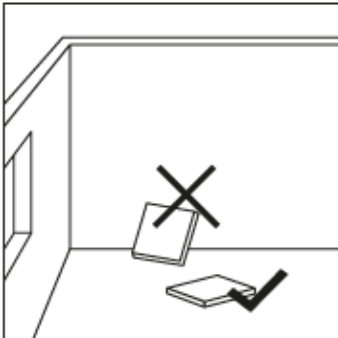


Screw:

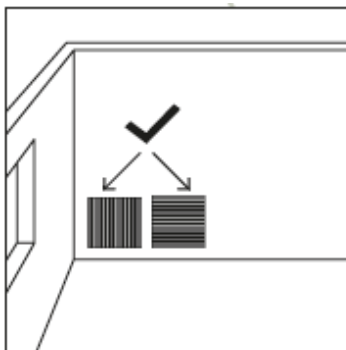
- Cordless or manual screwdriver
- Drill, if necessary
- Screws (dowels), suitable for the wall condition
- Spirit level
- Pencil

Glue:

- Glue gun
- Adhesive suitable for the surface
- Spirit level



Never store the packages upright, instead lay them flat on an even surface to avoid deformation.



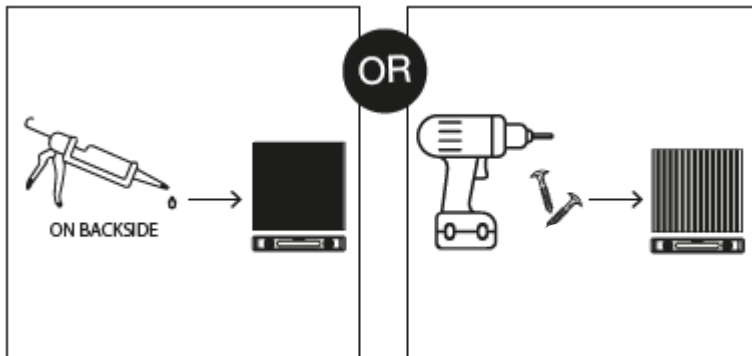
The substrate must be clean and dry. Before installation, completely remove old coverings from the subfloor, if they affect the evenness or hinder the mounting.

The panels can be mounted vertically or horizontally as desired.

If you cut the panels to size, use a cutter knife. We recommend that you tape the cut on the veneer with masking tape to prevent fraying.

Wall mounting

The acoustic panels can either be screwed or glued to the wall.



Screw:

For mounting, you will need four screws (520 x 520 mm) or ten screws (1040 x 520 mm) per panel, which need to be evenly spaced and colour-matched to the felt.

Screw through the felt. Mark the holes on the panel beforehand.

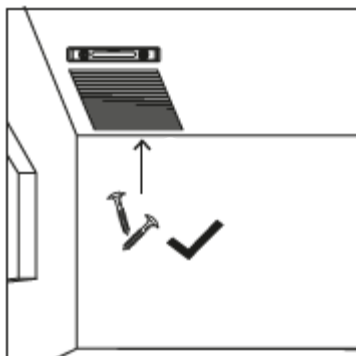
Glue:

For gluing the acoustic panels, we recommend a solvent-free assembly adhesive. However, the selection of the appropriate adhesive always depends on the substrate.

The adhesive is applied in spots or in serpentine lines on the back.

Align the panels with the spirit level and press on.

Ceiling mounting



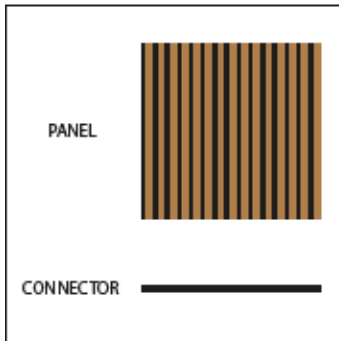
Screw:

Installation on the ceiling is always done with screws.

Use four screws (520 x 520 mm) or ten screws (1040 x 520 mm) per panel, evenly spaced and matching the colour of the felt.

Screw through the felt and align the panels correctly using a spirit level.

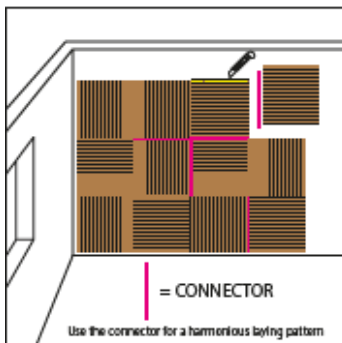
Connector



If two panels meet without a nut, then the connector strip is used.

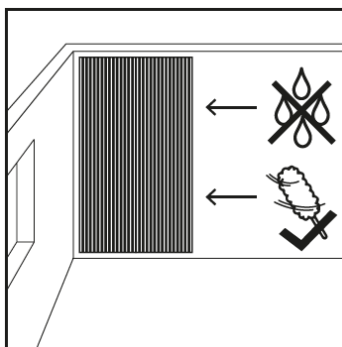
The width of the connector strip corresponds to the width of a nut.

The connector strip can be glued or screwed to a wall for mounting.



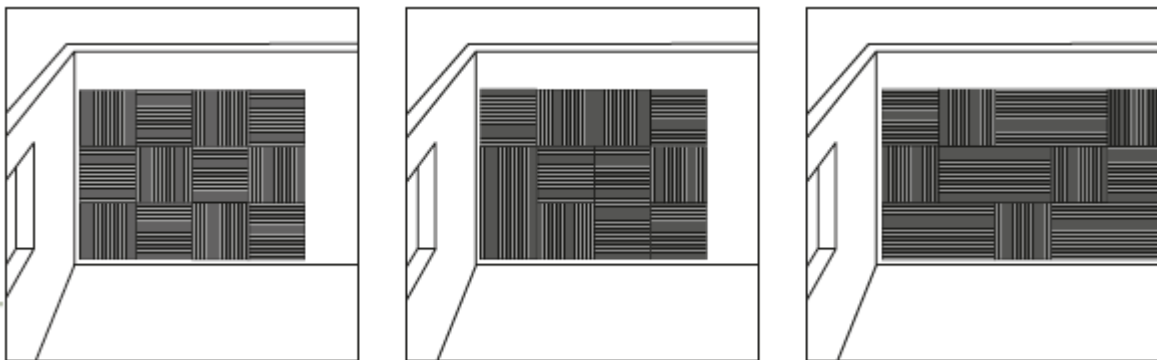
The graphic below shows where the connector strip can be used if the following arrangement of the panels is chosen.

With the help of the connector strip, it is possible to arrange individual acoustic panels rotated by 90° in such a way that an aesthetically pleasing overall picture results.



We recommend using a dry duster to care for the acoustic panels.

Multiple designs and combinations with other formats possible, for example:



JANGAL modular wall can be combined with other panels, e.g. with Smart Acoustic.

If you have any further questions about the installation of the acoustic panel, we will be happy to help you. Simply send us your enquiry by e-mail or give us a call.